

SCEPTER® service entrance fittings redesign for 2-1/2" to 4"

Scepter® rigid service entrance fittings are suitable for overhead service drop entry points. Our service entrance fittings have been redesigned, featuring a new compact design with a snap-in assembly. While previously heavy and bulky, the redesigned fittings are sleek and lightweight for ease of installation. These new service entrance fittings will be available in 2 1/2" to 4" sizes.

All 2-1/2" to 4" sizes are UL listed and CSA certified so you can expect the same level of quality that is synonymous with the Scepter brand. 1/2" to 2" sizes are still available in the original fitting design.

Size	NEW Product Code	OLD Product Code
2-1/2"	277157	077287
3"	277158	077288
3-1/2"	277159	077289
4"	277160	077290

Features and Benefits:

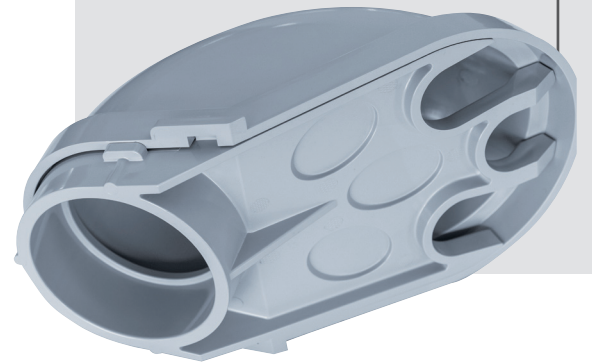
- Features a smaller compact design that is lighter, for easier installation
- Features a snap-in assembly

Standards:



UL 651

CSA C22.2 No. 85-14



Contact us

Visit our website: ipexna.com

Toll free U.S.: (800) 463-9572

Products manufactured by IPEX Electrical Inc. and distributed in the United States by IPEX USA LLC.