

PLASTIC IRRIGATION PIPE (PIP)

Nominal Pipe Size (inches)	Outside Diameter	Minimum Wall				
		SDR93.5 100' HD	SDR81 50 PSI	SDR51 80 PSI	SDR41 100 PSI	SDR32.5 125 PSI
4	4.130	-	0.065	0.081	0.101	0.127
6	6.140	0.070	0.076	0.120	0.150	0.189
8	8.160	0.087	0.101	0.160	0.199	0.251
10	10.200	0.109	0.126	0.200	0.279	0.314
12	12.240	0.131	0.151	0.240	0.299	0.377
14	14.280	0.153	0.176	0.280	0.350	0.441
15	15.300	0.164	0.189	0.300	0.373	0.471
16	16.314	-	0.201	0.314	0.390	0.492
18.3	18.360	0.197	0.227	0.360	0.448	0.565
18.7	18.701	0.200	0.231	0.366	0.456	0.575
20.4	20.400	0.218	0.252	0.400	0.498	0.628
21	22.047	0.236	0.272	0.432	0.538	0.678
24	24.803	0.266	0.306	0.486	0.605	0.763
27	27.953	-	-	0.548	0.682	0.860

C900 / C905 CAST IRON PIPE

Nominal Pipe Size (inches)	Outside Diameter	Minimum Wall AWWA C900, C905, CSA B137.3					
		DR14	DR18	DR25	DR32.5	DR41	DR51
4	4.800	0.343	0.267	0.192	-	-	-
6	6.900	0.493	0.383	0.276	-	-	-
8	9.050	0.646	0.503	0.362	-	-	-
10	11.100	0.793	0.617	0.444	-	-	-
12	13.200	0.943	0.733	0.528	-	-	-
14	15.300	1.093	0.850	0.612	0.471	0.373	-
16	17.400	1.243	0.967	0.696	0.535	0.424	-
18	19.500	1.200	1.083	0.780	0.600	0.476	0.382
20	21.600	-	1.200	0.864	0.655	0.527	0.424
24	25.800	-	1.433	1.032	0.794	0.629	0.506
30	32.000	-	1.778	1.280	0.985	0.780	0.627
36	38.300	-	-	1.532	1.178	0.934	0.751
42	44.500	-	-	1.780	1.369	1.085	0.872
48	50.800	-	-	2.032	1.563	1.239	0.966

IRON PIPE (IPS)

Nominal Pipe Size (inches)	Outside Diameter	Minimum Wall						
		ASTM D2241				ASTM D1785		
		SDR64 CL63	SDR41 CL100	SDR32.5 CL125	SDR26 CL160	SDR21 CL200	SCH40	SCH80
2	2.375	-	-	0.073	0.091	0.113	0.154	0.218
2 1/2	2.875	-	-	0.088	0.110	0.137	0.203	0.276
3	3.500	-	0.085	0.108	0.135	0.137	0.216	0.300
3 1/2	4.000	-	0.098	0.123	0.154	0.190	0.226	0.318
4	4.500	0.070	0.110	0.138	0.173	0.214	0.237	0.337
5	5.563	0.087	0.136	0.171	0.214	0.265	0.258	0.375
6	6.625	0.104	0.162	0.204	0.255	0.316	0.280	0.432
8	8.625	0.135	0.210	0.265	0.332	0.410	0.322	0.500
10	10.750	0.168	0.262	0.331	0.413	0.511	0.365	0.593
12	12.750	0.199	0.311	0.392	0.490	0.616	0.406	0.687
14	14.000	-	0.341	0.430	0.538	0.666	0.437	0.750
16	16.000	-	0.390	0.492	0.615	0.762	0.500	0.843
18	18.000	-	0.439	0.554	0.692	0.857	0.562	0.937
20	20.000	-	0.488	0.615	0.769	0.952	0.593	1.031
24	24.000	-	0.585	0.738	0.923	1.143	0.687	1.218

SEWER PIPE

Nominal Pipe Size (inches)	Outside Diameter	Minimum Wall ASTM D3034		Nominal Pipe Size (inches)	Outside Diameter	Minimum Wall ASTM F679	
		SDR35	SDR26			PS46	PS115
4	4.215	0.120	0.162	18	18.701	0.499	0.671
6	6.275	0.180	0.241	21	22.047	0.588	0.791
8	8.400	0.240	0.323	24	24.803	0.661	0.889
10	10.500	0.300	0.404	27	27.953	0.745	1.002
12	12.500	0.360	0.481	30	32.000	0.853	1.148
15	15.300	0.437	0.588	36	38.300	1.021	1.373
				42	44.500	1.187	1.596
				48	50.800	1.355	1.822



The Largest Manufacturer of FABRICATED PVC PIPE FITTINGS

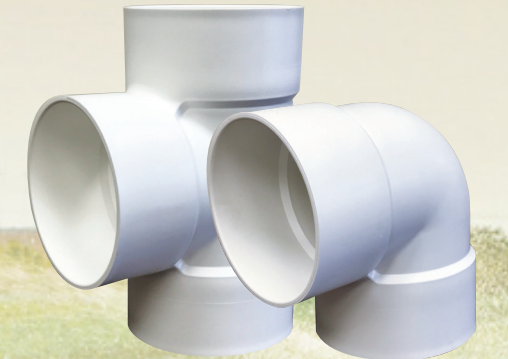
SOLVENT WELD
PIP 50, 80, 100, 125
PIP x IPS 100, 125



GASKETED
PIP 80, 100, 125



MOLDED
PIP 6" - 15"



PRESSURE SOLVENT WELD & GASKETED
IPS Class 63, 100, 125



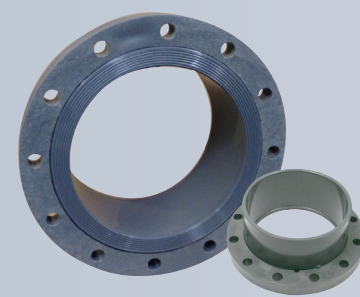
SCHEDULE 40
PVC Pressure



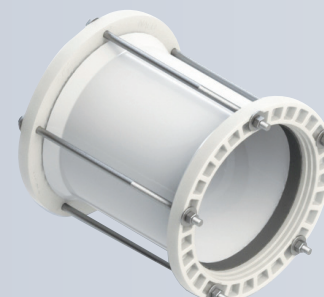
PRESSURE SOLVENT WELD & GASKETED
IPS Class 160, IPS Class 200



FLANGES
Vanstone & Blind



REPAIR COUPLERS
Bolted



SOLVENT WELD & GASKETED
Surface Gated 22 psi



CERTA-LOK
Yelomine Fittings

