

# The Industrial Pipeline

## Ending the Daily Grind

Duraplus™ Industrial ABS replaces steel pipe at the Sacramento Regional Wastewater Treatment Plant.



Photo Credit:  
[www.regionalsan.com](http://www.regionalsan.com)

In early 2002, it became clear that maintenance on the grit removal system at the Sacramento Regional Wastewater Treatment Plant (SRWTP) was required. Moving 100+ million gallons per day (MGD) of grit was quickly wearing out the original steel pipes, and replacement was needed. After testing several piping systems, the SRWTP decided to replace a section of steel pipe with Duraplus™ Industrial ABS to test its durability and reliability.

After more than five years of service, the Duraplus Industrial ABS test spool and 90° elbows showed no signs of wear. The SRWTP engineering and operations group decided to begin

replacing all of the steel pipe on the grit removal system with Duraplus Industrial ABS.

**Because of the pipes' light weight, ease of installation, and heat forming capabilities, a project that was budgeted for a year took approximately six months.**

One of the many benefits of Duraplus Industrial ABS is its ability to be easily heat formed. Costs and time were saved by using the existing pipe rack and creating custom bends manufactured in the IPEX fabrication facility.



**IPEX**  
by aliaxis

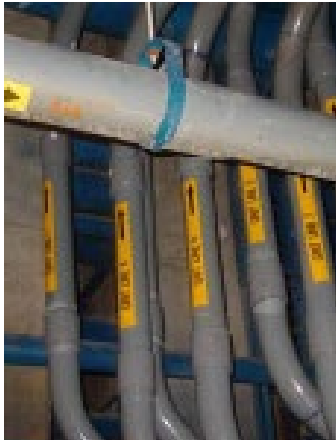
See Next Page

# Duraplus™

ABS INDUSTRIAL SYSTEM

Duraplus™ Industrial ABS piping system by IPEX offers a complete range of pressure pipe, valves and fittings that are ideal for demanding applications ranging from abrasive slurries and separation reagents to caustic processes and low temperature glycol systems. These rugged Duraplus components operate over a wide range of temperatures while delivering the following excellent material properties:

- Exceptional Toughness
- Non-Toxicity
- Corrosion Resistance



Duraplus™ Industrial ABS is 1/4th the weight of steel, making it easier to transport on site. Duraplus Industrial ABS is joined by a solvent cement system, so special equipment is not required.

The final sections were installed late in the summer of 2007.

Because of the pipes' light weight, ease of installation, and heat forming capabilities, a project that was budgeted for a year took approximately six months.

Our thanks go out to the engineering and operations group at the SRWTP for letting us show them they picked the right product for one of their toughest applications.

## The Leaders in Thermoplastic Piping Systems.

As the leader in thermoplastic piping systems, IPEX Companies design and manufacture the largest, most recognized and diverse range of integrated piping products – everything professionals need to manage the full spectrum of today's municipal, industrial, commercial and residential challenges.

[ipexna.com](http://ipexna.com) | Toll Free: 1-800-463-9572

Duraplus™ Industrial ABS is a trademark of IPEX Branding Inc.

