

## First on 7th, Fort Worth: A New Look for a Legacy Space and Endura® Was There to Help

### CASE STUDY

#### CHALLENGE

The location did not have enough space to install a large concrete grease interceptor to separate fats, oils and grease.

#### SOLUTION

**enduraXL**  
Grease Interceptor

- + Ideal for space constrained installations
- + Lightweight and easy to install
- + One-piece tank with no seams to weaken the structure or collect corrosive material
- + Injection molded in engineered thermoplastic, making it noncorrosive and able to endure the toughest environments
- + Available in 99% Efficiency Miami-Dade DERM FOG Ordinance solutions



Photo Credit: [friston7th.com/new-about](http://friston7th.com/new-about)

First on 7th began in 1961 as the First National Bank of Fort Worth, a 21-floor office building. Situated in the heart of busy Fort Worth, Texas, it was the epitome of mid-century, modern office design. In 2019, the building was rechristened First on 7th and began its journey into the 21st century.

The original plaza surrounding the building is now expanded with a new plan for green space offering shade for anyone working, living, and visiting downtown. New retail tenants are also being added to the space, including a grocery store and a restaurant.

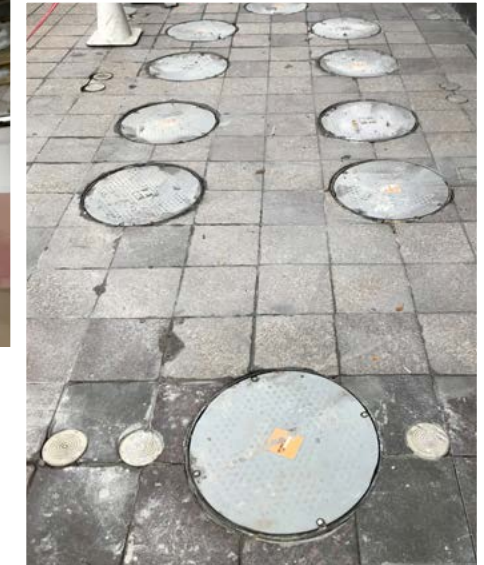
**“This project couldn’t have happened without these grease interceptors. They were lightweight and easy to get in and set.”**

David Bruce, Freer Mechanical

In order to accommodate the fats, oils, and grease (FOG) waste generated by the restaurant and the grocery store, the city required the construction of a 4,000 gallon, concrete Gravity Grease Interceptor (GGI) in which grease would be collected and allowed to separate. As the grease waste within the tank accumulates, it must be regularly emptied and safely disposed of without harm to the local sewerage system. Unfortunately, First on 7th is in the heart of an established business district, and there is no room to install such a large gravity tank—imagine an 8 ft. x 10 ft. room in your house with a 7-foot ceiling. Endura® had the answer.



Rather than one large concrete gravity tank, four Endura XL100 Grease Interceptors were installed quickly in the confined space



As with many older buildings, once you start taking out walls and ceilings, you find hidden obstacles you did not know were there. Once the ceiling was taken out, a large electrical conduit line could be seen running directly above the spot where the units were to be placed. This line blocked the extensions that needed to go up to the exterior of the building, providing access to the pumper that cleans the units. This line could not be moved, so the original arrangement of the units had to be modified. Thankfully, Endura® units have the flexibility to accommodate a variety of construction and plumbing restraints and conditions. The following are pictures of the original design vs. the amended design adapted to accommodate the conduit line running overhead.

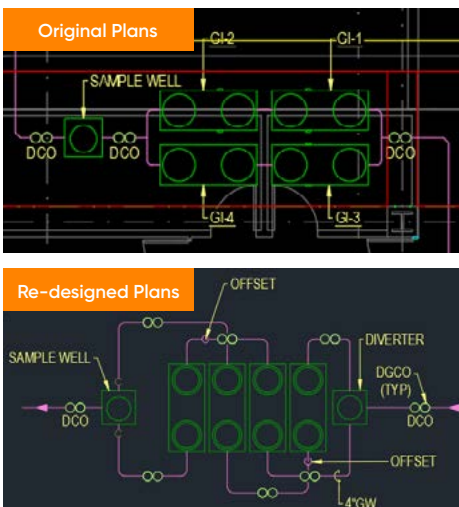
Endura® XL100 Grease Interceptors are durable workhorses that can take on the challenge of a large flow of wastewater, and effectively separate the FOG from the water all in a fraction of the size of a GGI. Rather than one large concrete gravity tank, four Endura XL100 Grease Interceptors were installed quickly in the confined space. David Bruce, from Freer Mechanical adds, "This project couldn't have happened without these grease interceptors. They were lightweight and easy to get in and set."

in a fraction of the footprint of a GGI. Endura XL00 consistently offers high performance hydromechanical grease management, with some of the industry's highest fats, oil and grease separation efficiencies.

Endura Grease Management products use the latest materials technology, designed from the ground up, to offer installation flexibility, convenience and durability.

Endura GIs are categorized as Hydromechanical Interceptors (HGIs) which means, by code, they must be subject to rigorous performance testing to ensure a minimum performance standard. The project engineers and the City embraced the Endura products for their ease of installation, enhanced performance and promise of longevity. The four Endura® XL100 units have been installed and are ready to work.

Endura XL100 grease interceptors have a variety of accessories and configuration options to allow for application-specific solutions where Conventional, less flexible products are simply not an option. The Endura XL100 is designed and approved for applications up to a 100GPM flow rate while the unit itself remains compact, meaning the unit can house just as much grease, but



To learn more about Endura Grease Interceptors, please visit [EnduraGreaseManagement.com](https://EnduraGreaseManagement.com)

