

## System 636<sup>®</sup> CPVC Termination Kits

Three ULC S636 certified ways to terminate your System 636<sup>®</sup> Flue Gas Venting system

**Universal Concentric Vent Kits (UCVK<sup>™</sup>):** The System 636 UCVK<sup>™</sup> offers horizontal coaxial termination specifically for venting tank-less water heaters installed on an exterior wall. An engineered air intake hub pivots to accommodate the spacing requirements between the fresh air and exhaust collars for most brands of tankless water heaters offered on the market today. Designed utilizing the fundamentals of the Concentric Vent Kits, the UCVK is made to optimize productivity through ease of installation.

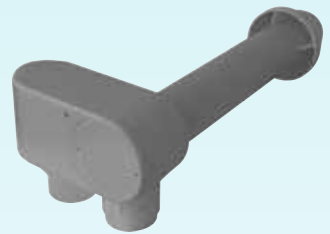
**Concentric Kits (CPVC):** System 636 Concentric Kits, are available in a variety of lengths and come in 2", 3" and 4" diameters. These "pipe-in-pipe" kits allow for both exhaust and intake pipes to penetrate the roof or side wall through only one hole. The concentric vent kits are now certified with mechanically fastened rain caps. When installed with the included stainless steel screw/nut the rain cap can be easily removed for cleaning or replacement. Vent screens and round face plates for side wall terminations are also available, see reverse.

Longer barrel length options allow for greater flexibility during installation. Required for steeper pitched roofs, and is ideal for high snow load areas.

### Standards:



The System 636<sup>®</sup> UCVK<sup>™</sup> in CPVC is shown



Universal Concentric Vent Kits	
Size	Product Code
3" CPVC	197256

Concentric Kits	
Size (in)	CPVC (grey) Product Code
2 x 16	197040
2 x 28	197033
2 x 40	–
3 x 20	197009
3 x 32	197107
3 x 44	197117
4 x 36	197021

Vent Screen not included



## System 636 Termination Accessories

**Vent Screens:** IPEX also offers 2", 3", 4", 6" and 8" vent screens to prevent debris and rodents from entering and plugging the venting system. The uncertified vent screens can be friction fit in any IPEX termination kit.

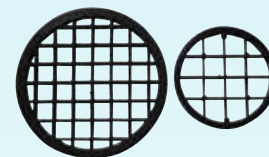
**Vent Screens:** These round face plates are the perfect accessory for single wall penetrations like the Concentric Vent Kits, or in instances where two pipes are too far apart to use a two hole termination kit. The face plates help cover unsightly bore holes created during the pipe installation. They are available in both white and grey to match the certified vent pipe, and each plate includes a self sealing foam back.

Visit us online or contact IPEX for a full list of System 636 FGV accessories.

Vent Screens	
Size	Product Code
** 2"	196050
** 3"	196051
** 4"	196052
* 6"	196090
* 8"	196091

\* Stainless Steel, \*\*Polyethylene

Round Face Plates	
Size	Product Code
2"	* 197053
3"	* 197054
4"	* 197055



### Contact us

Visit our website: [ipexna.com](http://ipexna.com)

Toll free USA: (800) 463-9572

System 636® and UCVK™ are trademarks of IPEX Branding Inc.