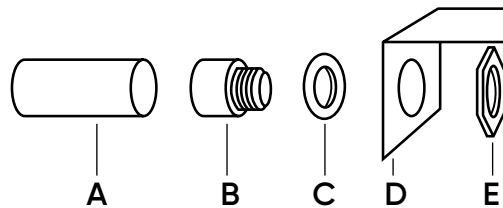
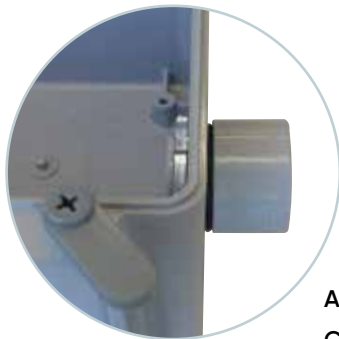


SCEPTER® Water-Tight Junction Box Connections

Creating a Water-Tight Junction Box Connection

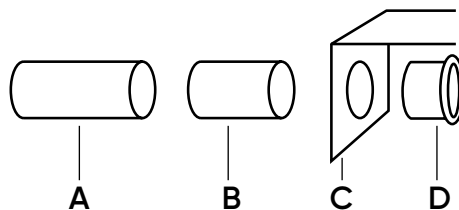
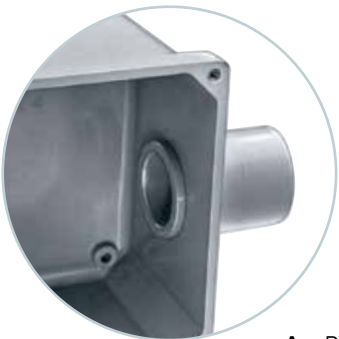
To ensure the optimal water-tightness for Scepter PVC Conduit connecting to PVC junction boxes (JB, JBX or JBXH), IPEX suggests two possible solutions:

1. Use of a Terminal Adapter (TA) with O-Ring Gasket



A = PVC Conduit B = Terminal Adapter
C = O-Ring Gasket D = PVC Box E = Locknut

2. Use of Scepter Junction Box Adapter (JBA)



A = PVC Conduit B = Coupling C = PVC Box D = JBA

Note: Make sure to use a generous amount of IPEX 100 PVC Cement when solvent welding the coupling to the JBA.



The Scepter® JBox™ is ideally suited for indoor and outdoor use and made to perform in the most demanding environments. Made of PVC, it is extremely durable and resistant to impact in a wide range of temperatures and not adversely affected by water and chemicals. Built for corrosive environments, the Scepter JBox is entirely non-metallic, eliminating corrosion concerns with screws and other metal parts.



Contact us

Visit our website: ipexna.com
Toll free USA: (800) 463-9572

Products manufactured by IPEX Electrical Inc. and distributed in the United States by IPRX USA LLC. JBox™ is a trademark of IPEX Branding Inc.