

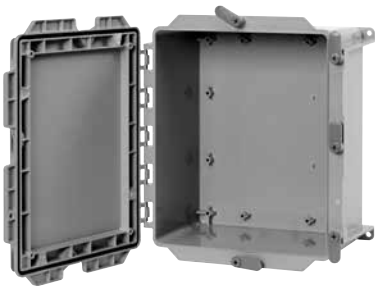
Scepter® JBox™

The Next Generation Junction Box



The RIGHT Box for the RIGHT Environment

The Scepter® JBox™ with Hinged Cover opens more than 200° for complete and easy access to control devices and instruments. 100% non-metallic, this box is ideally suited for indoor and outdoor industrial, MRO and OEM applications and in wash-down environments. The Scepter JBox with Hinged Cover is suitable to be used as an enclosure per section 18 of UL 508A and is NEMA 12 rated for industrial use providing protection from contact and from harmful effects; dust-tight and drip-tight.



Available on all 8" to 16" Series JBoxes, the Hinged Cover features:

- A removable cover that opens more than 200°
- Back panels available for all sizes – white powder-coated
- Standoffs are molded-in to accept back panels as well as DIN rails
- Hand-close fastener tabs
- NEMA Rated 1, 2, 3R, 4, 4X, 12, 13



UL 50 / CSA C22.2 NO. 94.1,
UL 50E / CSA C22.2 NO. 94.2,
CSA C22.2 NO. 40 CSA C22.2 NO. 85

ipexna.com | 1-800-463-9572

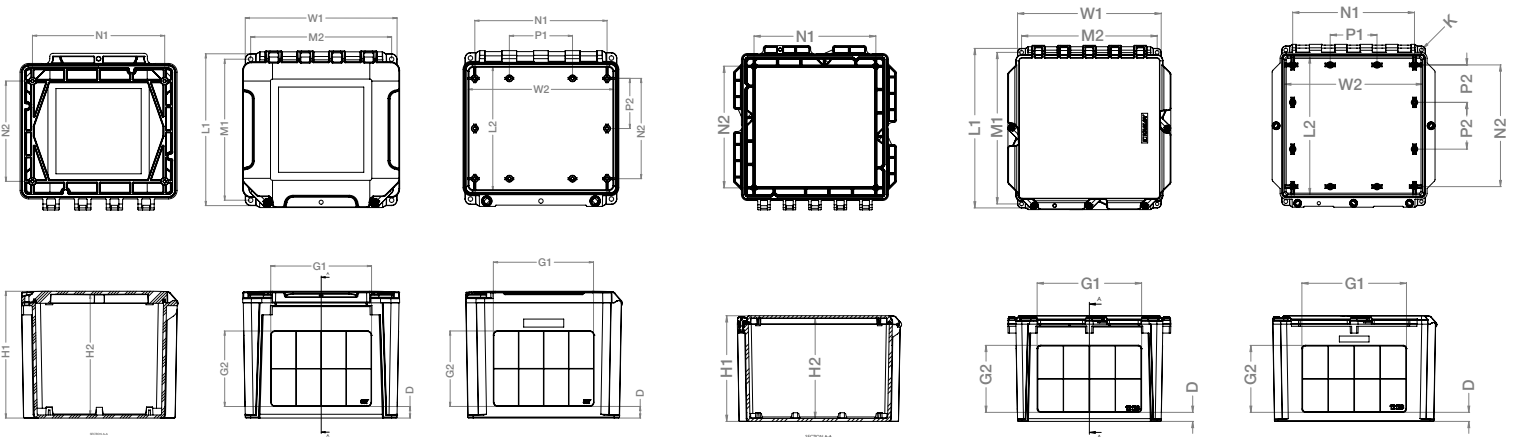


Products manufactured by IPEX Electrical Inc. and distributed in the United States by IPEX USA LLC.
Scepter® JBox® is a trademark of IPEX Branding Inc.



SCEPTER® JBOX™ WITH HINGED COVER

Size (inches)	Part Number	Product Code	Sizes (inches)															Vol. (in ³)	
			L1	W1	L2	W2	H1	H2	M1	M2	G1	G2	N1	N2	P1	w	D		K
8 x 8 x 4	JBXH884	277100	9.58	9.58	7.86	9.20	4.90	4.52	8.90	8.90	6.47	1.97	8.25	6.26	3.94	3.13	0.59	0.28	293.19
8 x 8 x 7	JBXH887	277101	9.47	9.47	7.86	9.20	7.90	7.52	8.90	8.90	6.22	4.65	8.25	6.26	3.94	3.13	0.75	0.28	506.97
12 x 10 x 6	JBXH12106	277102	11.51	12.17	9.67	11.67	6.90	6.46	10.80	10.80	8.03	3.78	10.25	8.26	3.94	2.16	0.67	0.28	682.15
12 x 12 x 4	JBXH12124	277103	13.58	12.24	11.74	11.74	4.90	4.46	12.90	12.90	9.28	2.03	10.26	10.25	3.94	3.13	0.56	0.28	548.26
12 x 12 x 6	JBXH12126	277104	13.58	12.24	11.74	11.74	6.90	6.46	12.90	12.90	9.03	3.78	10.26	10.25	3.94	3.13	0.67	0.28	822.21
12 x 12 x 8	JBXH12128	277105	13.58	12.24	11.74	11.74	8.90	8.46	12.90	12.90	8.81	5.64	10.26	10.25	3.94	3.13	0.76	0.28	1092.9
14 x 14 x 8	JBXH14148	277106	15.72	14.39	13.80	13.80	9.10	8.46	15.10	15.10	11.05	5.69	12.25	10.26	3.94	3.16	0.83	0.33	1535.00
14 x 14 x 10	JBXH141410	277107	15.72	14.39	13.80	13.80	11.10	10.52	15.10	15.10	11.05	7.55	12.25	10.26	3.94	3.16	0.83	0.33	1916.00
16 x 16 x 10	JBXH161610	277108	17.64	16.30	15.71	15.71	11.10	10.52	17.00	17.00	12.55	7.55	14.25	12.26	4.71	4.09	0.83	0.33	2520.00



JBXH884 – JBXH887

JBXH12106 – JBXH161610



SCEPTER® JBOX™ BACK PANEL

Size (inches)	Part Number	Product Code	Sizes (inches)				
			W	H	A	B	C
8 x 8	BP88CSW	077861	6.88	8.75	6.26	8.25	0.25
12 x 10	BP1210CSW	077862	8.88	10.75	8.26	10.25	0.25
12 x 12	BP1212CSW	077865	10.88	10.75	10.26	10.25	0.25
14 x 14	BP1414CSW	077867	10.88	12.75	10.26	12.25	0.25
16 x 16	BP1616CSW	077868	12.88	14.75	12.26	14.25	0.25

