

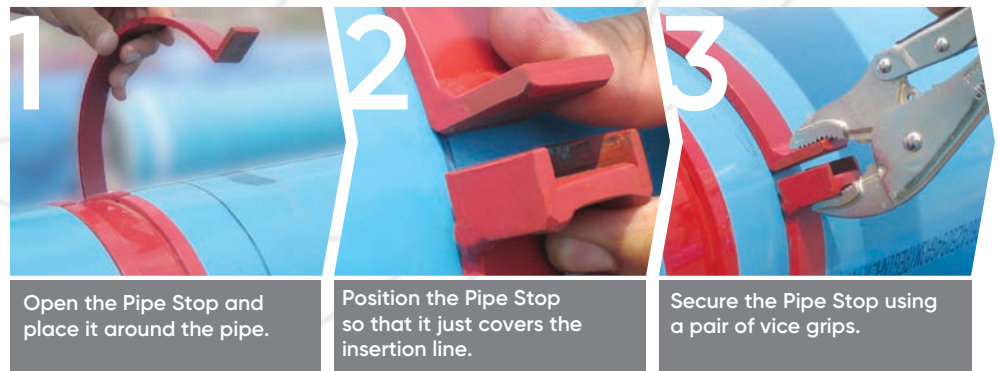
NEW PRODUCT SHOWCASE

TerraBrute® CR Pipe Stops

IPEX TerraBrute CR Pipe Stops have been specifically designed to simplify the installation of 8", 10", and 12" TerraBrute CR. Due to fairly large insertion forces, it can often be difficult to align the internal groove with the pin holes on the larger diameter TerraBrute CR; the new TerraBrute CR Pipe Stops will virtually eliminate the problem of over-homing the pipe. TerraBrute CR Pipe Stops reduce stoppages in the installation process to pull back and reposition the pipe.

IPEX TerraBrute CR Pipe Stops can be placed on the pipe quickly and easily; a pair of vice-grips is all that is needed to secure the Pipe Stop in place. Made from high-strength steel, TerraBrute CR Pipe Stops are designed to withstand repeated use for all of your installations.

Assembly



1 Open the Pipe Stop and place it around the pipe.

2 Position the Pipe Stop so that it just covers the insertion line.

3 Secure the Pipe Stop using a pair of vice grips.

FEATURES AND BENEFITS:

Easy to Use

TerraBrute CR Pipe Stops are simple and easy to use, offering quick assembly and disassembly to help prevent installation delays. A pair of vice grips is all that is needed to secure the Pipe Stop.

Strong and Tough

Made from steel, TerraBrute CR Pipe Stops are built strong and tough. The rugged design ensures years of problem free service.

Prevents Over-Homing

TerraBrute CR Pipe Stops virtually eliminate the risk of over-homing the pipe. There is no need to pull back and reposition the pipe as the groove will always end up properly aligned with the pin holes.

Part Number	Description
099023	8" TerraBrute CR Pipe Stop
099024	10" TerraBrute CR Pipe Stop
099025	12" TerraBrute CR Pipe Stop

