

AquaRise® Spigot Repair Fittings

For instances when a repair cannot be scheduled or delayed, and getting a downed system back up and in the fastest time possible is needed, IPEX has a quicker solution.

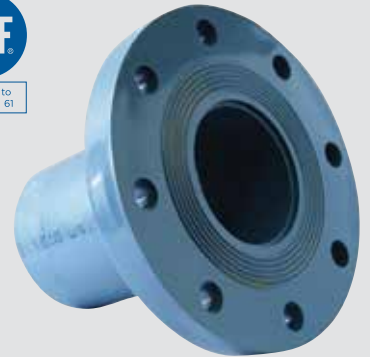
When used in conjunction with the AquaRise® Maintenance Couplings these pre-solvent welded assemblies provide a transition to copper to complete the necessary repairs. Although we encourage the use of AquaRise products in AquaRise system repairs – this repair method can get your system back up and running without needing to account for solvent cement cure times in your repair schedule.

The spigot assemblies are sold separately from the required Maintenance Couplings and the Full Pressure Flange Kits. Maintenance Couplings are suitable for pipe to pipe connections only and are not suitable for use with any spigot ends of molded fittings. Spigot repair assemblies are fabricated with pipe stubs and may be used with maintenance couplings.

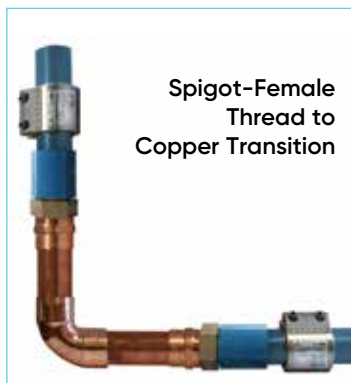
Features and Benefits:

- Available in Spigot x Female Thread and Spigot x Flange configurations, with an option for sizes from 1" to 4"
- Benefit over metal with a system that's fully approved for noncombustible applications
- Pipe, valves and fittings are designed to function as a system, yet flexible enough to work universally with other products
- Comes with technical support and onsite trouble-shooting

Standards:



Spigot x Female Thread Availability		Spigot x Flange Availability	
Size (inches)	Part Number	Size (inches)	Part Number
1	359063	2-1/2	359057
1-1/4	359064	3	359058
1-1/2	359077	4	359059
2	359065		
3	359066		



Contact us

Visit our website: ipexna.com

Toll free Canada: (866) 473-9462

AquaRise® and the colour of the AquaRise® pipes and fittings are registered trademarks. Distributed in Canada by IPEX Inc., Mississauga, Ontario.